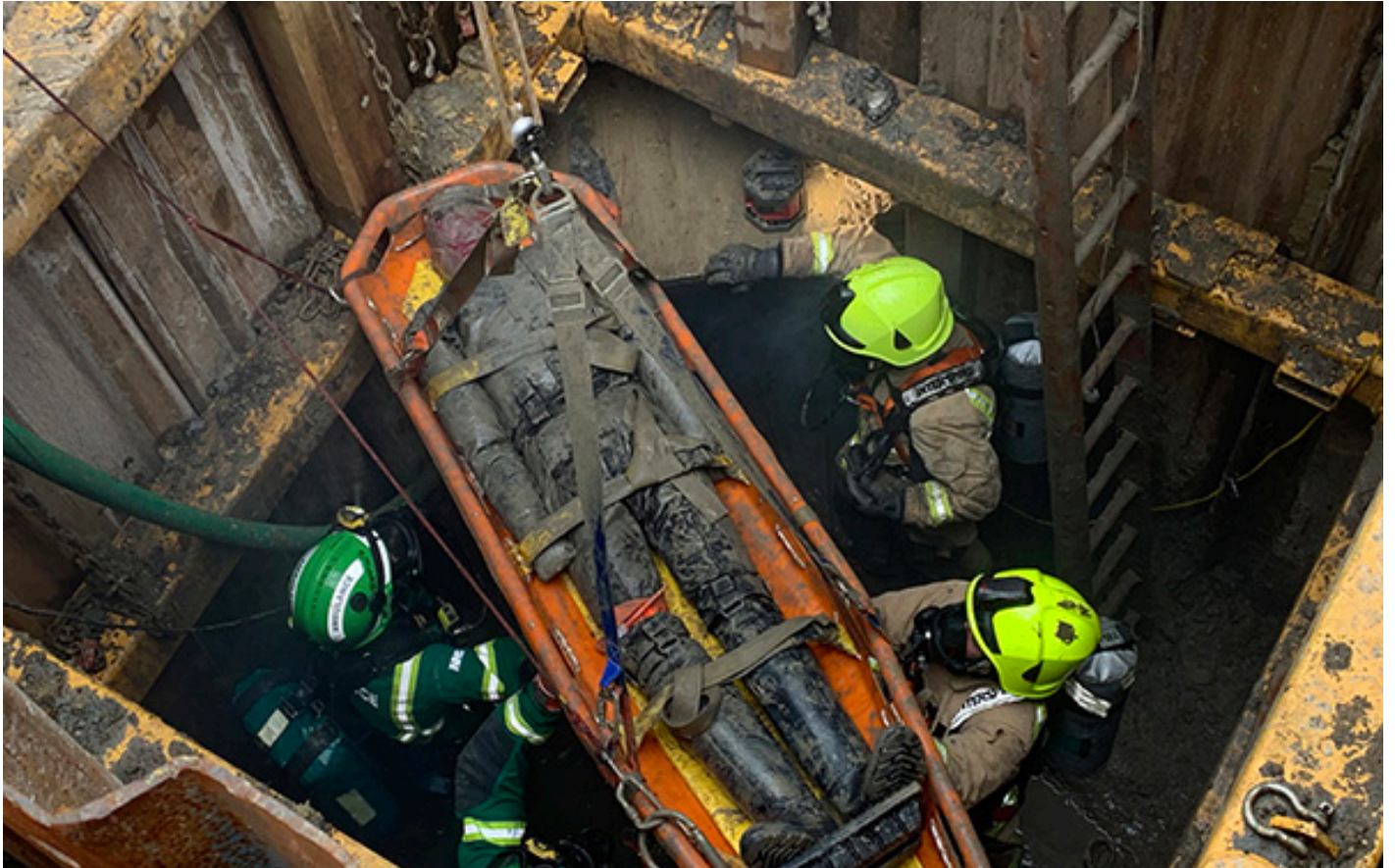


RUTH LEE™



CONFINED SPACE MANIKIN

FOR PROFESSIONALS WHO SAVE LIVES

Ruth Lee is a family business whose core values revolve around the care of our employees, service to our customers and uncompromising product quality. We are proud to serve YOU, the dedicated professionals who make such a valuable contribution to society.

We employ highly skilled people and source the most durable materials to ensure our products meet the highest international standards.

Our manikins are designed to represent the correct anatomic weight distribution of a real person, and we offer a range of different models to suit every conceivable scenario. This ensures that your training is as realistic and as effective as possible; preparing you for all eventualities.



**A.L.G.
SAFETY**

AVAILABLE IN
CANADA WITH
ALG SAFETY

LEARN MORE ABOUT OUR
EXTENSIVE RANGE OF
TRAINING MANIKINS,
BESPOKE BAGS,
OPERATIONAL
PRODUCTS AND FIRE
SIMULATION EQUIPMENT

SPEAK TO THE EXPERTS:

📞 905-517-7406

✉ alangeeafr@yahoo.com

💻 www.algsafety.biz



CONFINED SPACE MANIKIN

IDEAL FOR THE FOLLOWING TRAINING SCENARIOS:

Confined space, Urban Search & Rescue (USAR), Road Traffic Collision (RTC), Mountain or Cave Rescue scenarios.

SPECIAL MATERIALS:

Constructed from the same flame retardant material used in Police ballistic/stab vests, offering 4x the strength and abrasion resistance of 16oz canvas or P.V.C. (conforms to OEKO-TEX® Standard 100, BS EN ISO 12947-2 & 14116: 2008). High density polypropylene webbing (25mm rated to 207 Kg, 50mm rated to 440Kg).

FEATURES & BENEFITS:

- Manikin splits into smaller parts with no individual component weighing more than 25kg.
- Due to its detachable limbs it is easier to position in your rescue scenario, especially for training such as confined space.
- Anatomically correct weight distribution to give the 'feel' of an unconscious casualty.
- Strong webbing loop at the back allows easy handling, hauling aloft, storage and suspension for drying.
- Tough enough to withstand being buried under concrete or steel lintels, driven over by a 4x4 vehicle, or dropped from a 2nd floor window without damage (approx 4 meters).

- Water repellent material, making it suitable for wet or foul scenarios such as HAZMAT/CBRN.
- Soft body joints to eliminate the risk of pinch welts and bruising; common injuries when using plastic bodied manikins.
- Comes complete with boots, which are easily replaced if damaged.

NOT SUITED FOR:

- Use in temperatures above 100°C or flashover scenarios – See our Fire House manikin.
- Use in water – See our Water Rescue range.

OPTIONAL EXTRAS:

- Shoutbox and hood to give your casualty the power of speech to add extra realism.
- Face mask and wig for a more human-like appearance.

PARTICULARLY USEFUL FOR:

- Fire & Rescue teams.
- Technical Rescue training providers.
- Police, Ambulance/EMS/HART teams.
- Mountain Rescue and Cave Rescue Teams.

AVAILABLE WEIGHTS & SIZES:

DESCRIPTION	MODEL CODE	HEIGHT (M)	WEIGHT (KG)	NATO STOCK #
CONFINED SPACE MANIKIN	RLNCS50	1.8	50	NA